



Gotha MS

Media Center Collection Development Plan
2023-24

Monica Emery
Principal

Matthew Irwin
Certified Educational Media Specialist

Table of Contents

Table of Contents	2
Executive Summary	3
District Strategic Plan 2025	3
School Collection Development Plan	3
School Assessment Analysis	4
Collection Analysis	5
Collection Analysis by Category	6
Notes	6
Representation Analysis	7
Results	7
Strategic Focus	8
Budget and Purchasing Plan	9
Annual Budget 2023-2024	9
Purchasing Plan 2023-2024	9
Year-to-Year Collection Change	10

Executive Summary

District Strategic Plan 2025

Orange County Public Schools is the eighth-largest school district in the United States and the fourth largest in Florida. The district serves more than 206,000 students at 202 schools and is one of the largest employers in Central Florida with more than 25,000 team members.

Vision: To ensure every student has a promising and successful future.

Mission: With the support of families and the community, we create enriching and diverse pathways to lead our students to success.

School Collection Development Plan

Gotha MS serves 1037 students enrolled in grades sixth through eighth. The student population's ethnicity is made of 30% Hispanic and 70% Non-Hispanic students. Additionally, we serve a diverse population made up of 55% White, 35% Black, 0% Native, 6% Asian, 0% Pacific, and 3% Multicultural students.

The administration includes Principal Monica Emery and Assistant Principals Chivas Coner and Christina Hopkins. Gotha MS is proud to offer the many special programs which provide students with opportunities. These include Fianchetto (Chess) Club, Grizzly Gamers Guild, National Junior Honor Society, Drama Club, Pride Club, Gardening Club and Battle of the Books.

A thorough analysis of the current media center collection at Gotha MS indicates that the average age of the collection is 2008 and the number of books per student is 13. The [American Association for School Libraries](#) has established a criteria for highly effective media centers that includes a ratio of 15-20 books available per student in the collection.

At this time, Gotha MS does not meet the recommended standards for the number of books per student.

The analysis of the collection also revealed the following areas of strengths and concerns:

- Students' scores at this school, with few exceptions, stagnated or declined.
- The non-fiction titles are in need of updating.
- Non-fiction science and technology needs updating.
- Purchases of new books will focus on underrepresented demographics.
- Weeding will focus on the OCPS Catalog Project expectations as well as aged titles in fiction and/or nonfiction.
- The average age of the collection is too old due to neglected weeding of books with aged titles. When weeding is completed, the average age of the collection will greatly improve.

- In addition to the physical media center collection, the district provides almost 5,000 eBooks, audiobooks and digital magazines.

School Assessment Analysis

The school assessment analysis provides an overview of the school's assessment data for the previous two school years.

Proficiency Data							
Assessment	2021-22	Assessment	2022-23	Assessment	2021-22	Assessment	2022-23
FSA ELA Grade 6	53%	FAST ELA Proficiency Grade 6	43%	FSA Math Grade 6	41%	FAST Math Proficiency Grade 6	48%
FSA ELA Grade 7	51%	FAST ELA Proficiency Grade 7	51%	FSA Math Grade 7	47%	FAST Math Proficiency Grade 7	29%
FSA ELA Grade 8	52%	FAST ELA Proficiency Grade 8	46%	FSA Math Grade 8	33%	FAST Math Proficiency Grade 8	53%
Civics EOC	62%	Civics EOC	64%	FSA Algebra 1 EOC	86%	BEST Algebra 1 EOC	73%
NGSSS Sci 8 EOC	50%	NGSSS Sci 8 EOC	51%	FSA Geometry EOC	95%	BEST Geometry EOC	98%

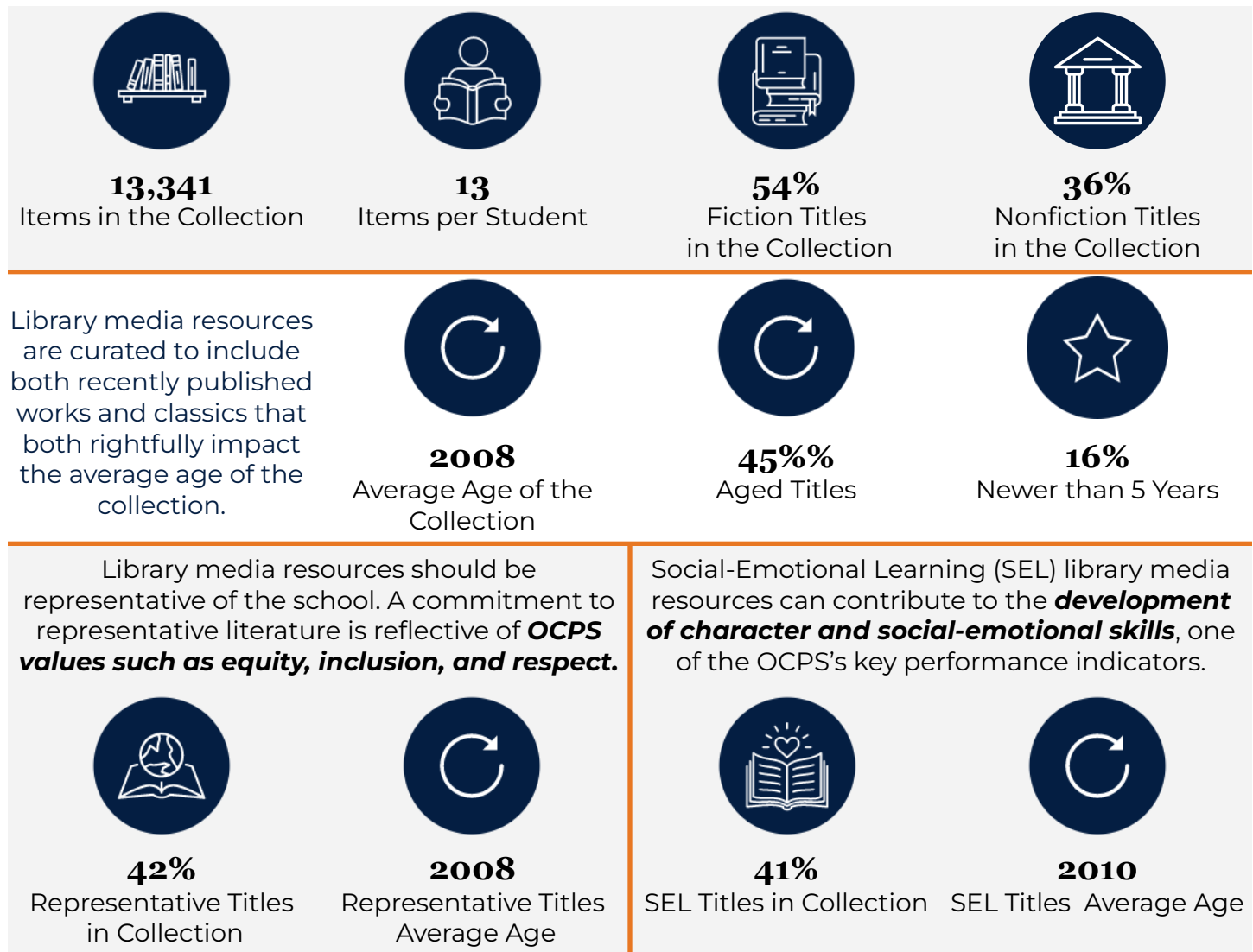
Comparison between 2021-22 and 2022-23 Testing Data

(adapted from <https://www.fldoe.org/accountability/assessments/k-12-student-assessment/results/2023.stml>)

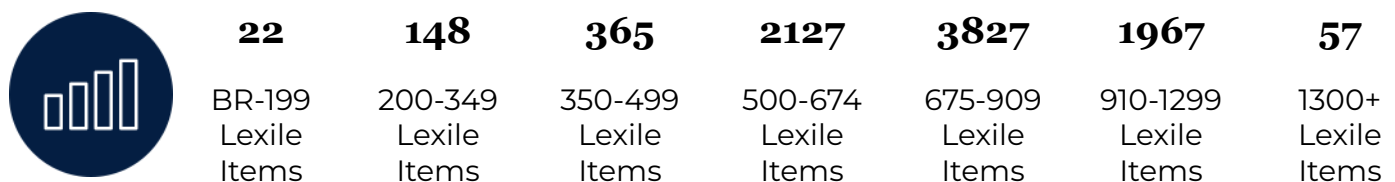
In 2023, the state transitioned from Florida Standards Assessments (FSA) to Florida Assessment of Student Thinking (FAST) for English Language Arts (ELA) and Mathematics. The 2022-23 for FAST and Benchmarks for Excellent Student Thinking (B.E.S.T.) End-of-Course (EOC) assessments are based on **provisional** achievement level cuts that are linked to each assessment's respective 2021-22 reporting scale. Comparisons should not be made between the 2023 data and previous years' data.

Collection Analysis

The collection is developed for and influenced by students, their interests, academic needs and alignment to the curriculum. The data below is a snapshot of the collection based on a Titlewise Analysis from July 2023. Purchasing or weeding after that time is not reflected in this data.



Library media resources are distributed across the ***Lexile reading level ranges*** noted below.



Collection Analysis by Category

The information collected in this section provides a detailed look at the current library collection by classification and genre. The information was gathered from Follett Destiny, the library management system, and Titlewave, the vendor's ordering and analysis tool.

Section	# of Titles	Average Age
Computer Science, Information & General Works	109	2013
Philosophy & Psychology	73	2008
Religion	89	2005
Social Sciences	732	2008
Language	253	2007
Science	558	2009
Technology	467	2010
Arts & Recreation	430	2010
Literature	234	2001
History & Geography	1147	2006
Biography	522	2006
Easy	418	2001
General Fiction	6700	2009
Graphic Novels	834	2012

Notes

- Easy selections need updating.
- Science, Technology and Computers need updating.
- Religion and philosophy could be expanded.

Representation Analysis

Enrollment & Demographic Data					
1037 2023-24 Student Enrollment as of September 7, 2023	Subgroups		Federal Ethnicity		
	27% ELL	12% ESE	30% Hispanic	70% Non-Hispanic	
Federal Race Category					
55% White	35% Black	0% Native	6% Asian	0% Pacific	3% Multicultural

To deepen focus on strategic collection development, specific sections of the collection were analyzed in detail to determine whether the media center collection reflects and represents various points of view and experiences. The goal is to provide a balanced collection that can be both a mirror, to reflect a reader's experience, and a window, so readers can experience different viewpoints.

Results

Based on the available school data of Gotha MS in comparison to Collection Analysis results, it was found that:

Student Representation	% of Students	Total # of Titles	Total % of Titles	Avg. Age of Titles
Hispanic	30%	263	2%	2009
Black	35%	641	4%	2008
Native	0%	126	.9%	2003
Asian	6%	106	.8%	2010
Pacific	0%			

- Additional diverse titles representative of our students are available, but not accounted for, in the table above.

- Many of our students read in their native language as well as emerging second language readers. This is a need in our collection.

Strategic Focus

This page lists the priorities for selection and weeding for each school year and includes the action, updates, and outcomes. This is subject to change due to funding and time constraints.

School Year	Strategic Focus
2023-2024	Selection Priorities <ul style="list-style-type: none"> • Biography • Science and technology • Easy selections • Missing books from series
	Weeding Priorities <ul style="list-style-type: none"> • Multiple copies of past SSYRA books and other duplicates. • Aged Science and technology titles • Aged biographies
2024-2025	Selection Priorities <ul style="list-style-type: none"> • Arts and recreation • Professional Development books • Science and technology

	Weeding Priorities <ul style="list-style-type: none">• Duplicate SSYRA and other fiction titles• Sports and entertainment• Philosophy, psychology and religion
--	---

Budget and Purchasing Plan

This page outlines the current budget available and specifically lists the priorities for this school year (2023-2024).

Annual Budget 2023-2024

State Funds	
Source	Amount
State (1001111000)	16,535.17
Internal Accounts	
Source	Amount
Book Fair Profits	
Scholastic Bucks	1,546
Library Fines	
Grants or Donations	
TOTAL	18,081.17

Purchasing Plan 2023-2024

Approximate Purchasing Plan	
Purpose	Amount
Update Science and technology	\$2,000.00

Easy Selections	\$500.00
Biography	\$700.00
Fiction	\$2,000.00
TOTAL	\$5,200.00

Year-to-Year Collection Change

The information below represents the year-to-year change within the library media center collection from the 2022-23 to 2023-24 school year. The 2022-23 data is based on a collection analysis from June 2022, while the 2023-24 is based on a collection analysis from July 2023.

Data Reflection

- Average Age of the collection has not changed.
- Percentage of representative titles has not changed.
- Marginal addition to the number of items per student.
- Lack of weeding has inflated size of collection




2022-23 Purchased and Weeded Materials

Materials
Added to the
Collection

608

Materials
Weeded from
the Collection

111


Category	2022-23	2023-24
 Items in the Collection	12755	13,341
 Items per Student	12	13
 Average Age of Collection	2008	2008



**Representative
Titles in the
Collection**

42%

42%

Signature: 
Monica Emery (Oct 11, 2023 08:56 EDT)
Email: monica.emery@ocps.net

Signature: 
Matthew Irwin (Oct 11, 2023 09:32 EDT)
Email: matthew.irwin@ocps.net